

Mablins Lane Community Primary School Newsletter ~ 9th July 2020

Dear Parents and Children,

Week 6 – What has happened to the weather? I think maybe we are in 'real' British Summer Time now. Let's hope not and the sun returns to us very soon.



Return to School

Our EYFS, Year 1, Year 5 and Year 6 children continue to enjoy a varied menu of activities including lots of outdoor learning. All children have settled well to the routines with lots of hand washing and social distancing. It is very hard to keep 2m apart all of the time but the children try very hard and we are very proud of them all.

The systems we have put in place at the beginning and end of the day seem to be working well. Our Y6 pupils walk sensibly to Parkers Road at 3:10 leaving room for EYFS and Year 1 parents to safely exit at 3:15. All Key worker children are still exiting through the main entrance which is also working well.

Thank you to all parents for observing the social distancing rules and making drop off and collection this week run so smoothly.

Forest School Sessions

This week the children back in school have been enjoying forest school sessions again with their small pods. It has been great to see the children participating and enjoying these sessions outside in our forest school area, even in the pouring rain!



Capacity

The school continues to operate at capacity under the current restrictions. This has been such a difficult time and we just want all our children back in school, but we have to do this under the current social distancing guidelines. We sincerely apologise that this is the case, but it is impossible to find the space and the staffing to welcome back any further children or year groups.



Home Learning

For the year groups who continue to work at home, we salute you and thank you for still engaging with the VLE and our on-line activities. We will continue to look at ways to involve the children through a variety of activities. The VLE has been refreshed and work will be continually updated.

VLE

The VLE is now running smoothly again after a few problems last week. We have tidied up each year groups page so that the current weeks work is on and just the previous weeks work. Please get in touch:

deputy@mablinslane.cheshire.sch.uk if you have any questions relating to the home learning on the VLE/Pupil Login pages.



September 2020

A huge positive has been the announcement that school should fully re-open in September and we are looking at the details and planning how we can organise the school over the summer break to accommodate this. As soon as we have the details we will let you know.

Tuesday 1st September is an INSET day for staff, but all children will be expected to return on **WEDNESDAY 2ND SEPTEMBER 2020**.



We are really looking forward to seeing all the children back in school.



Transition

This week we have started our 'Meet the Teacher Storytime' in school. Our current EYFS, Y1 and Y2 children have been invited and most have attended a session in the Studio Hall with their new teacher. Current Y3 are scheduled for today with Y4 on Monday 13th and Y5 on Tuesday 14th. There are two 30 minute sessions for each class held over the day. Pupils already in school will automatically be taken for the session. Pupils not currently in school are asked to arrive and be collected from the main entrance.

Those children who have already enjoyed their 'storytime' have been really positive and are very much looking forward to September.

REPORTS

End of Year reports will be distributed on Friday of this week. This year we will be sending the report by email. If we do not have an email address, we will send a text message to you requesting a current email address.

Whilst it is more difficult for us this year, we still want to celebrate success and report on the wealth of personal achievements over the year. We hope that parents appreciate the reports, and would like to congratulate all our children for their input over the last school year.



END OF TERM - Finishing 17th July

Next week is our final week of the Summer Term. The school will be open until FRIDAY 17TH JULY, when we will then close until September. The staff will be in school for INSET on 20th – 22nd July and will also be using the end of July and August to organise the teaching spaces in order to welcome back ALL our pupils in September.



School Meals

School Dinners

The school kitchen has continued to prepare a grab bag menu, and these bags are being delivered to the children's pods at lunchtime. In September the kitchen will be fully open and will be serving hot lunches for all children. EYFS, Y1 and Y2 are entitled to a universal free school meal each day. Children in Years 3/4/5/6 may order a lunch at £2.40 per day. Joy is working up a new menu, which was discussed with the School Council before lockdown, and includes many of the children's favourites.

Free School Meals

The Government promised to support those families where pupils are entitled to a 'free school meal' (FSM). The National voucher scheme was set-up in order to deliver this support. Just a reminder that vouchers are still available over the summer holiday, but we must order them this week for you. Children can have a voucher or a meal. Once children return to school a meal will be provided instead of the voucher unless you inform us otherwise and send in a packed lunch.

If your situation with work has changed recently you may be eligible to apply for Free School Meals, which



automatically releases additional funding to school, which could for example subsidise school trips for your child. Please see for more information:

<https://www.gov.uk/apply-free-school-meals>

Snacks

Snacks will not be available from school for the first few weeks of term, until we have assessed the risk, and worked out the viability. Therefore we ask children to bring in their own healthy snack for break time. This could be a piece of fruit, cereal bar or some biscuits. Sweets and chocolate are discouraged.

Children should also bring a named water bottle to school with them each day for WATER to keep them hydrated.



Reminder

Once children are back in school they should be in school full time unless they are ill. If this is the case, a message left on the answerphone in the usual way would be most welcome. This will allow us to deploy staff appropriately and will ensure that we have the correct pupil/staff ratios.



Covid Symptoms

Now that the school is open more widely it is very important to remember that should any child or member of their family present with symptoms (Loss of taste/smell, high temperature, persistent cough.) **THEY SHOULD NOT COME TO SCHOOL UNDER ANY CIRCUMSTANCE.** Testing is now more widely available, including at Leighton hospital. A test should be sought immediately and the individual should self-isolate for 7 days with associated family members isolating for 14 days. The virus is more contagious during the early period before symptoms begin to manifest, hence the 14 isolation period.

If a child should attend school and begin to show symptoms a parent will be called immediately. The child will be isolated in our 'Silver Birch Room' near to the main entrance. On arrival at school parents will be asked to telephone the office and the child will then be brought out to the car park. A test will be requested by school. Should this test be positive then pupils and staff who have been working in that 'pod' will be sent home



to self-isolate for 14 days. The 'pod' will be subject to a 'deep clean'.

Home Learning



We understand that over time home learning will be getting harder especially as some children have lost their initial motivation. Please try and encourage some home learning at home whether this is reading a book together or doing one small thing a day from the VLE.

How to log on:

VLE (Virtual Learning Environment) Pupil Home Access Login

Go to our website: www.mablinslaneschool.co.uk

Click on "Pupil login"

Select – (choose your year group)

Enter your password – **year5_vle (Change year group accordingly)**

Each year group has tried hard to include a menu of learning to make the activities at home interesting and enjoyable.

Communication - Email addresses for year groups

Don't forget your year group email addresses, as below. Your email will be answered by one of the teachers in your child's year group, during school working hours. Do get in touch we would love to hear from you.

Please also send any photos or work as the teachers would love to see home learning.



Year Group - Email Address Mablins Lane CP School

New EYFS starters Sept 2020

eyfs20@mablinslane.cheshire.sch.uk

eyfs@mablinslane.cheshire.sch.uk

year1@mablinslane.cheshire.sch.uk

year2@mablinslane.cheshire.sch.uk

year3@mablinslane.cheshire.sch.uk

year4@mablinslane.cheshire.sch.uk

year5@mablinslane.cheshire.sch.uk

year6@mablinslane.cheshire.sch.uk

We encourage this to be a positive communication channel, and look forward to hearing from you about what you are doing.

Visitors

Currently - there will be no additional visitors to school, no assemblies or large gatherings and the children will remain in their pods working with specific children and adults only.

Children's Check in

During this time, we want to reach out to you and offer our support as much as we can.

If you are feeling lonely, if someone is being unkind online, or if you would just like to check in with us, please get in touch.

Just like in school, you can reach out to talk to us by emailing: mlcps@mablinslane.cheshire.sch.uk

Likewise if you, or a member of your family, have been seriously impacted by Covid-19 then please let us know. We are here to help and can pass on the details of support networks if we are unable to help you ourselves. We don't know how many of our families have had a close contact with a Covid-19 sufferer or indeed a victim of this dreadful virus. Please let us know if you or someone you know is in that category.

Children and young people's wellbeing

The DfE have published advice to parents and carers on keeping children safe from abuse and harm. It can be found here:

<https://www.gov.uk/government/publications/coronavirus-covid-19-keeping-children-safe-from-abuse-and-harm>

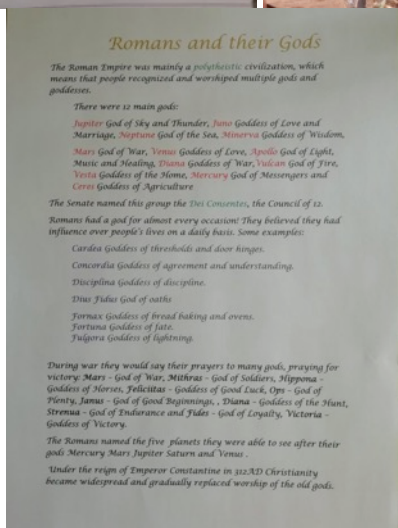
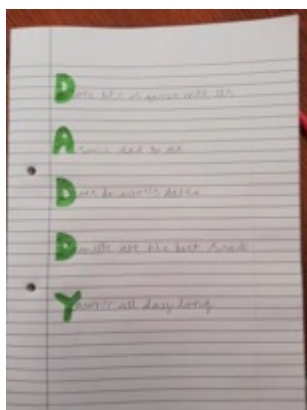


Celebration of home learning work

Thank you so much for the work that has been shared again this week! It is so lovely to see this work every week and that our Mablins children are enjoying their home activities. If you would like to share your learning too, then log in to the VLE pages on the website or email:-

deputy@mablinslane.cheshire.sch.uk





Mrs. Joule's Challenge

We had some superb jokes sent in last week, so thank you everybody for the smiles!!



THIS IS THE LAST CHALLENGE OF THE TERM!



FOREST SCHOOL CHALLENGE 23



Make a God's Eye from 2 or 3 sticks and some wool.
Watch Red Ted Art's how to video to see how:

https://www.youtube.com/watch?v=X53ZXcHoR_c



Summer Reading Challenge

The local libraries have continued with the Summer Reading Challenge but this year it's a virtual challenge. More information can be found here:

<https://readingagency.org.uk/news/media/the-summer-reading-challenge-is-asking-the-nation-to-join-the-silly-squad.html>



The digital platform is **FREE** and safe for children and families to use. Cheshire East Libraries will be supporting the Summer Reading Challenge through their own e-lending platforms and social media.

As well as signing up to take part at silysquad.org.uk, they would like to encourage families to follow them on their local Cheshire East Library Facebook page e.g. @CreweLibrary, and on Twitter @CECLibraries. The daily Facebook posts contain lots of interesting items and activities for both adults and children such as online Rhyme times/Storytimes and book reviews.

School Place Allocation EYFS September 2020



We are looking forward to meeting you very soon!

If you haven't yet looked, please check out the section on the website '**New Starters September 2020**'. Any new information will be added to this area for reference.

This week we have been so pleased to be able to welcome 4 families per class each day to visit school. It has only been a short visit, but has allowed children and parents the opportunity to meet their teachers and see the EYFS department. These visits will continue over the rest of this week and in to next week.

We are still finalizing the plans for September and will get these out to you next week.

Great News – Celebration

Over the last week we have been notified that we have successfully achieved the 'INTERNATIONAL SCHOOLS AWARD'. This is a real accolade and is the result of lots of hard work from the staff and pupils.



Priorities for coming weeks

Our priorities over the next few weeks include:

- Monitoring and reviewing the arrangements we have made to care for the children of parents working as 'Key Workers'
- Inviting our new EYFS/Sept 2020 starters to school
- Transition arrangements for September 2020 and story time sessions with new (Sept) teachers
- Ensuring good communication with all families, particularly those not expected to return to school this month

Stay Safe

We will endeavour to carry on communicating with you and ensuring that you are well informed.

Remember that Class Dojo is currently suspended and communication should be via:

Year group emails,

head@mablinslane.cheshire.sch.uk or

admin@cheshireeast.gov.uk

Take care, look after yourselves and remember, some of us are available in school if you need any support, help or advice.

Make sure that you do what feels right for you, be aware of your own feelings and be kind to yourself and others.

With kind regards

Justine Joule - Headteacher

