

## Mablins Lane Community Primary School

### Newsletter ~ 12<sup>th</sup> February 2020

Dear Parents and Children,

The year is flying by. We have left January behind and are now entering the last week before our half term break. There has been much activity and much to celebrate. Please keep an eye on our website <https://mablinslaneschool.co.uk/> and follow us on Twitter @MablinsSchool for up to the minute photos and information.

#### **Choir**

Last Tuesday evening a large number of choir members performed at SWS to support their production of 'Oliver'. Parents and friends of Mablins swelled the audience by more than 80 in support. The choir were brilliant – very well done!

#### **Cadbury's World**

On Thursday last week all of Year 3 spent the day at Cadbury's World to enhance their history and geography work. After an early rise the journey went well and the coaches arrived on time. The children saw lots of exhibits, took part in workshops and had several sneaky tastes of chocolate on the way! The day was a huge success. Many thanks to the parent helpers who accompanied on the visit.



#### **Inside Out Day - Mental Health Awareness**

Many thanks to those pupils who supported our "Inside Out Day" last week. We managed to raise £105, but also more valuably we raised awareness of mental health and well-being.

"Inside Out Day" is a new initiative for Children's Mental Health Week. Inside Out Day calls for children and adults alike to wear an item of clothing 'Inside Out' as a way of making us all stop and think about how someone may look OK on the outside but inside they may be feeling sad or worried. The aim of Inside Out Day is to remind everyone to always be kind and think of others as no one knows how another person may be feeling.

#### **Sports Update**

On Thursday 30th Jan, the Year 5/6 Sportshall athletics team took part in the Crewe and Nantwich Finals at Brine Leas High School. A great effort from all of the boys and girls concerned and a worthy 5th place was achieved.

Mablins Netball teams played in the Crewe High 5 Netball competition on Wednesday 5th Feb. Our B Team came 3rd in their group whilst our A team won their group, narrowly edging out Brierley Primary school who they drew 4-4 with, but winning on overall goals scored. The team now advance to the Crewe and Nantwich finals.



#### **Safer Internet Day**

Tuesday 11th February was Safer Internet Day. Children were encouraged to think further about their safety online and how they can give/receive consent online. We ask that parents continue to talk to their children about staying safe online. We continue to Tweet useful advice and resources. If you don't already follow us on Twitter – please look for us '@MablinsSchool'.



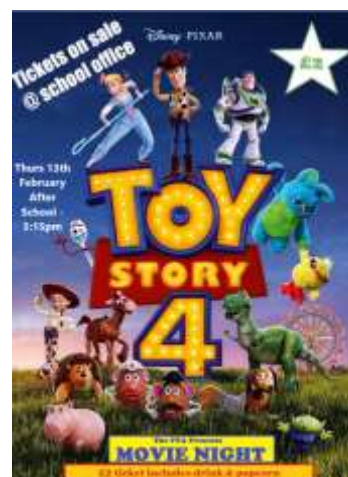
#### **PTA NEWS**

Whole School Movie Night – Toy Story 4 tickets now on sale!

Thursday 13th February after school till 5:15pm.

Tickets are £2 each which includes popcorn and a drink.

The numbers are limited to 250 so please purchase tickets asap from the School Office



### School Dinners

Every Tuesday, starting after half term, Joy and the kitchen team will be playing songs from the musicals during lunchtime, come and try school lunch and enjoy the music!

On **Thursday 13th February** Joy is inviting the children to celebrate Valentine's Day with a special school lunch. If your child would like this special school lunch on Thursday then all they need to do is to ask their teacher at registration on the day.



### Year 4 Anglesey Residential

For those children attending the Anglesey residential, there will be a parent meeting to provide further information in the main hall on **Monday 24th February at 3.30pm**. (Straight after half term.) This meeting will provide further details on the kit required and the programme. Please attend if you can.

### Parents' Evening

Parents' Evening will be held on Wednesday 26th and Thursday 27th February from 3.30pm to 6.30pm for all classes except Miss Gibson and Miss Stevenson. Please be sure to book your appointment. We use an online booking system for appointments and letters were sent out at the end of last week advising parents how to book. Please speak to the office if you have not had a letter or are struggling to book an appointment. If you are not able to make an appointment on either of those days – then please speak to your child's class teacher to see if it is possible to arrange an alternative appointment.

Miss Stevenson EYFS – Due to pre-booked training Miss Stevenson will hold her meetings with parents on TUESDAY 25<sup>th</sup> and THURSDAY 27<sup>th</sup> FEBRUARY.

### ARK Week – 24th February

After February ½ term we will be having our 2nd ARK week of this academic year. We will be focusing on the book 'Wonder' and we have planned workshops and assemblies with the Charity 'More than a Face'. On **Friday 28th February we are holding a non-uniform day** for this charity. Children can wear their own clothes for a donation of £1.00.



### World Book Day and Book Sale

The School Council and English Team are organising a World Book Day for **Thursday 5th March**. It would be great if children could start finding unwanted books to donate to school for our book sale that we will be having in the morning of the 5th March.



We are also asking if children could come **dressed as a book character** on this day.



We encourage families to be creative with home-made costumes and not to spend large amounts on shop bought items for the day.

### World Down Syndrome Day – Wear odd socks!



It's time to dig out your odd socks for another year as we get ready to celebrate World Down Syndrome Day on 20th March 2020! Cheshire Down's Syndrome Support Group are inviting Mablins Lane to join the award winning big gingerbread biscuit sale to celebrate. We will be selling gingerbread socks for 50p during morning play.

### CHANCE Changing Lives

We've set up a collection box in the main school entrance for CHANCE Changing Lives, a Crewe based charity who help people that are experiencing financial difficulties. They help provide emergency food, support, household items, toiletries, advice, clothing and dignity to the homeless and vulnerable. Please help us to support this worthwhile cause. The list of suggested items to donate at the front office is below.

**Rice / pasta, Pasta sauces, Children's cereal, Tinned foods, Coffee, Tea Bags, Juice, Crisps & Biscuits, Washing up Liquid, Toilet rolls, Kitchen roll, Toiletries & Cleaning Products & Toothpaste**





### Message from Our PCSO

Hello parents of Mablins Lane Primary School,

My name is PCSO Matt Oliver, I am relatively new to the Leighton area having previously worked in the town centre. Mrs Joule and myself are working together regarding issues that may be hindering the running of the school and need your help to be rectified.

In this letter, I would like to raise the issue of parking both pre and post school hours. On Wednesday 15/1/2020, I was conducting traffic down Mablins Lane where several cars were parked adjacent to the junction of Wareham Drive. Not only is this an offence, but it also blocked the bus route that ground traffic to a standstill from both directions. May I suggest parking your vehicle in the Eight Farmers car park and walking over to collect your children? I have written out several Advisory Notices and noted offending vehicle registrations, if they are to park there again I shall have no option but to issue Fixed Penalty tickets. Other reports include parking in the nearby housing estates, please be mindful not to block junctions and drive ways.

If anyone has any alternative ideas, or would like to discuss these issues further, I shall be available for drop in mornings at the school entrance. For times and dates, please monitor our Twitter @LeightonPol and Facebook page- LeightonPol.



### Safety Online

As part of our ongoing work to promote Keeping Safe Online, I would like to remind you of the helpful and informative resources which can be found in the 'Share Aware' section of the NSPCC website. This campaign is aimed at helping parents to keep their child safe on social networks. The campaign is particularly relevant for parents of children aged 8-12 and aims to give information and advice in a straightforward and no nonsense manner.

I am providing the hyperlink below for your information:

<http://www.nspcc.org.uk/preventing-abuse/keepingchildren-safe/share-aware/>

Please check the e-safety section of our school website for more helpful websites and information about online safety.

### Parent View

Thank you to the parents that completed the Parent View survey online in time for the Ofsted Inspection. You are still able to complete the survey for the Inspection Team up until noon on the 13<sup>th</sup> February 2020. The findings from the current Ofsted Inspection will be shared with parents as soon as we are legally allowed.

<https://parentview.ofsted.gov.uk/login?destination=giv-e-your-views>

### Pre-School at Mablins Lane

The Pre-school at Mablins Lane has now been open for 12 months and continues to go from strength to strength. It is now run by Kids Planet who operate several nurseries and before and after-school clubs in the area.

# Kids Planet

If you have a pre-school child and would be interested in joining the pre-school then we would love to hear from you. Places are available for most sessions. Please contact: 07422 665913 for more details.

### School Visits

Staff are planning many exciting trips and visits to support the learning for pupils across the school. Please can we remind parents that payment for trips should be made before the trip takes place. Trips are costed on the basis of the numbers attending – non-payment means that the school foots the rest of the bill which takes away money for vital resources. Payments can always be made in instalments and where there is financial hardship we are always happy to discuss options with parents. Please do get in contact to discuss options.

### Uniform REMINDER

As the winter comes upon us please try to keep to the uniform guidelines which are shoes and **NOT** trainers. Children may wear boots but it is good to have a pair of shoes to change in to at school to keep our floors and carpets clean. Children should have a warm coat for playtimes.



Easy to use **name labels** can be purchased from the school office. (25 name labels for £2.50 and 5 pairs of shoe labels for £3.00). Labels can be prepared swiftly, no long wait and no postage and packing! Please think about using this service.



### Lunch Money

Joy continues to cook a wide range of delicious lunches for a very reasonable £2.40 per meal. Pupils in EYFS, Y1 and 2 are entitled to 'universal free school meals' and no charge is necessary. There are various payment methods available for parents of pupils in Years 3/4/5/6 and we encourage you to think about choosing this option of a hot meal in the cooler months.

Meals must be paid for in advance, not arrears and meals can be refused if payment is outstanding. Currently there is an outstanding balance of £160 where pupils have taken a meal but payment has not been

received. Letters have been distributed and if payment is not received claims will be made through the Local Authority.

### Contact Information

As we are half way through the school year please can I remind parents to keep us up to date with contact details? It is vital that emergency contact details for our pupils are kept up to date. If any information, in particular mobile numbers, work numbers, addresses and email addresses has changed, please speak to the School Office and ensure that we have up to date information. Thank you.



### Diary dates for Spring Term!



13 Feb	Yr2 King's Banquet
13 Feb	3:30pm–5:15pm PTA Whole School Film Night – Toy Story 4
13 Feb	My World Graduation – Wychwood Park 9am – 11:30am
<b>13 Feb</b>	<b>Children break up for half term</b>
14 Feb	STAFF INSET
<b>24 Feb</b>	<b>Children return to school</b>
24 Feb	Yr4 Anglesey Trip Meeting 3:30pm
w/c 24 Feb	ARK week
25 Feb	1pm – 3pm 123 Magic
25 Feb	Miss Stevenson Parents' Evening 3:30pm – 5:45pm
26 Feb	Netball Final @ Brine Leas 3:30pm
26 & 27 Feb	Whole School Parents Evening 3:30pm – 6:30pm
28 Feb	Non-uniform day all children £1 donation to More Than A Face charity
2 Mar	EYFS School Nurse visit – Eyes & ears test (day 1)
2 Mar	1:30pm Yr5 Smoke Buster
3 Mar	Yr5 Viking Day (in school workshop)
3 Mar	1pm – 3pm 123 Magic
4 Mar	EYFS School Nurse visit – Eyes & ears test (day 2)
4 Mar	Yr2 Chinese Dance Main Hall
5 Mar	World Book Day come dressed as character from a book
5 Mar	World Book Day bring & buy book sale
6 Mar	Green Day
10 Mar	Games 4 All @ SCC
10 Mar	Swimming Gala Yr5&6 (10 children)
13 Mar	School Council Parliament Visit
13 Mar	Sport Relief
w/c 16 Mar	Yr6 SATs Practice Week
16 Mar	Yr3/4/5/6 Cross Country @ Crewe Vagrants

19 Mar	PTA Easter Bingo 6pm
20 Mar	Down Syndrome Day Wear odd socks to school and buy a gingerbread sock biscuit 50p
25-27 Mar	Yr4 Anglesey residential
25 Mar	Cheerleading @SWS 3pm-5:30pm
26 Mar	Yr6 Everyman Theatre trip – Holes
31 Mar	Spring Concert Choir & Violin groups

<b>2 Apr</b>	<b>Children break up</b>
3 Apr	STAFF INSET
<b>20 Apr</b>	<b>Children return to school</b>

Thank you for taking the time to read our school newsletter and for your continued support.

With kind regards

Justine Joule  
Headteacher