

## Mablins Lane Community Primary School Newsletter ~ 12<sup>th</sup> May 2023

Dear Parents and Children,

I hope that you all enjoyed the bonus Bank Holiday on Monday. Whether you spent the weekend doing all things 'Coronation' or you just loved having the extra time, I hope that you enjoyed it.

Next week is a full week in school and the penultimate week before half term. Year 6 will be engaged in a writing week and Y2 will be continuing with their SATs. It is 'Mental Health Awareness Week' and we will be looking at some activities on this theme.

The last week before half term is 'Show and Shine Week' where children will have the opportunity to showcase their talents. Please look out for information on how to get involved.

### Year 6 SATs

Year 6 have been busy undertaking their SATs in line with the National timetable this week.

Some children have joined us for breakfast in school with their friends prior to the tests.

The tests have been challenging but as usual our wonderful children have shown resilience and tenacity and have approached the tests courageously.

The tests have been sent away for marking with results expected to be back with us around 11th July. We know that our children have done their best and we are very proud of them.

### Y6 End of the week Treat

To celebrate the end of the assessment period Y6 spent the afternoon in our outdoor classroom, making 's'mores' and having a bit of outdoor fun!!!



### Thought of the Week

For all our wonderful **Year 6** pupils this week.

SATs don't measure sports  
SATs don't measure art,  
SATs don't measure music,  
Or the kindness in your heart.

SATs don't see your beauty,  
SATs don't know your worth,  
SATs don't see the reasons,  
You were put upon this earth.

SATs don't see your magic,  
How you make others smile,  
SATs don't time how quickly,  
You can run a mile.

SATs don't hear your laughter,  
Or see you've come this far,  
SATs are just a tiny glimpse,  
Of who you really are.

So sitting at your table,  
With a pencil and your test,  
Remember SATs aren't who you are,  
Remember **you're the best!**

### Celebration Assembly



No celebration assembly this week. Back to normal next week.

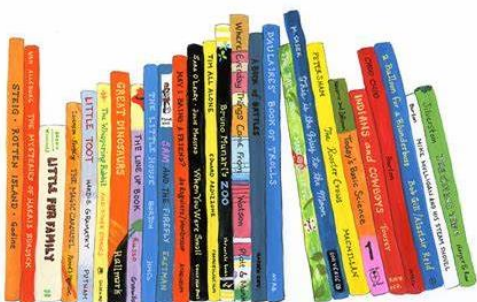
### Swimming Pool

Week 4 and the final swimming week for Year 4! We have seen some amazing achievements. We even had many children doing life-saving skills this week. Well done – Amazing!!!

### School Reading Books

Last summer we purchased a new phonics scheme which included lots of new books. It was expensive and a large commitment from our budget. We are sorry to find that lots of these books have been lost or damaged in book bags or at home. Please, please can we urge parents to support us in looking after our books. If the situation does not improve then we may have to start charging for lost or damaged books and we don't really want to have to resort to that.

## Ways to Take Care of Books



1. Don't write in your book!
2. Don't get your book wet!
3. Keep away from babies and pets!
4. Keep your books in a safe place!
5. Don't eat or drink when you're reading a book!

### School Uniform

As the summer approaches we invite pupils to wear shorts or summer dresses to school, and sensible sandals. We are proud of our school uniform and how smart it looks. Please support us by encouraging your child to wear the correct uniform. We have noticed lots of trainers recently. We understand that parents may not be able to afford school shoes and trainers, but we ask that children only come to school in dark trainers and not white or multi-coloured ones. We are actually seeing some very expensive trainers – they are not part of our uniform code.

**PLEASE WEAR CORRECT  
SCHOOL UNIFORM**

### Open Day

We will be welcoming parents to an Open Day after half term on Thursday 8th June. Parents are invited in to school to see books, class work and have a look around the school. The school will be 'open' between: 09:00 – 11:30 in the morning and 1:30 – 2:50 in the afternoon.



We hope that you will be able to join us and see the amazing work produced.

### KiVa School

[www.kivaprogram.net/parents-guide/](http://www.kivaprogram.net/parents-guide/)

Mablins Lane School is proud to be a KiVa school, below is a brief outline of what KiVa is all about, but for more information please click on the link above.



### What is KiVa?

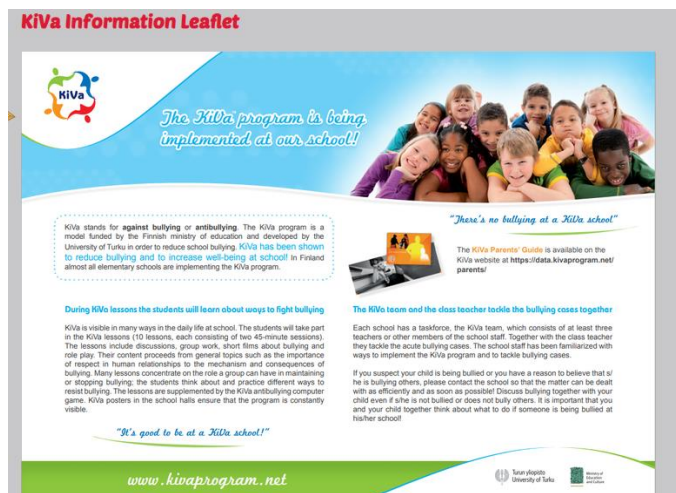
KiVa is a research- and evidence-based anti-bullying programme that has been developed in the University of Turku, Finland, with funding from the Finnish Ministry of Education and Culture. The strong effectiveness of KiVa has been proven scientifically through a large national randomized and controlled trial as well as several different studies. KiVa is being used around the world and it is the world's most studied anti-bullying programme.

### How does KiVa work?

The goal of KiVa is to prevent bullying and to tackle the cases of bullying effectively. The program is based on



decades of extensive research of bullying and its mechanisms. KiVa is based on three main elements: prevention, intervention and monitoring.



### Parking update

We continue to monitor parking around the school at the start and end of the school day. Many thanks to those families who have shown their support. Please be reminded that the Eight Farmers pub car park has been made available for school drop off / pick up parking.



### Road Safety



We have had a number of incidents around school this week and some near misses. A local teenager also has come off his bike near school when swerving to avoid a

parent who didn't look when crossing the road. Please can we ask parents to be vigilant when crossing our busy roads around school and to please use the zebra crossing when crossing Parkers Road. Thank you.

### Ice lollies



The Kitchen will be selling ice lollies again in Summer 2 term. Joy will be selling these at lunchtimes on Tuesdays and Fridays at 50p each. Starting from Tuesday 6<sup>th</sup> June 😊

### Mablins Lane Sponsored Virtual Fun Run to Australia

We are setting ourselves a massive challenge to virtually run / walk to Australia to raise money for much needed playground markings. The event will take place in school time over two weeks, starting on the 5<sup>th</sup> June. We will be sending more information and a sponsorship form home next week.



## **Mablins PTA News**

The deadline is drawing close for Penny Wars. Any more loose change please add to your class jar before the Half Term break.

**SUMMER  
FAYRE**

**FRIDAY 30TH JUNE  
3PM - 6PM**

★ ★ ★ ★ ★ ★ ★ ★ ★ ★ ★ ★ ★ ★ ★ ★  
**MABLINS LANE CP SCHOOL**  
★ ★ ★ ★ ★ ★ ★ ★ ★ ★ ★ ★ ★ ★ ★ ★

**IDEAS ★ SAVE THE DATE**  
**★ PLANNING MEETING ★**  
**★ TUESDAY 6TH JUNE ★**  
**3:30PM ★ IN SCHOOL**  
**★ EVERYONE WELCOME ★**

The National Walking Month is here! Walking helps us to improve our physical and mental health. We encourage

Shortbread finger  
with Fruit chunk or  
Fresh Fruit



EYFS, Y1 & 2 ENTITLED TO FREE SCHOOL MEALS  
Y3, 4, 5 & 6 MEALS COST £2.40  
PLEASE PAY IN ADVANCE VIA THE  
[CHESHIRE EAST EPAYMENT](#)

### Goblin Car

*Are you able to help the Mablings Lane Goblins?*

We are a team of children from years 5 and 6 who have worked together to build an electric car and it is almost time to try it out!



The year 5 and 6 Goblin car team are looking for donations to help with the resources of the car. If you have any spare items that maybe on the list below please contact the Mablings Goblin Team, c/o Miss Gibson.

The list of things we will need is:

- A driving safety helmet.
- Protective gloves.
- Any children's boiler suit.
- Any driving equipment/gear.

### Contact Details

If you have moved house, changed telephone number or would like to make changes to emergency contact numbers, please email:-

[admin@mablingslane.cheshire.sch.uk](mailto:admin@mablingslane.cheshire.sch.uk) with details and we will amend our records.

## CONTACT DETAILS

**DON'T FORGET TO UPDATE THE OFFICE IF YOU CHANGE YOUR ADDRESS, TELEPHONE NUMBER OR EMERGENCY CONTACT DETAILS**

With kind regards

Justine Joule – Headteacher

Dates  
for your



### ***School Dates for Your Diary***

w/b 15 May	Y2 SATs resume
w/b 15 May	Y6 Writing week
w/b 22 May	Y6 Lakes visit
w/b 22 May	Show and Shine Week
Tues 23 May	Y1 perform The Gingerbread Man
Thurs 25 May	Pep the Poet Y3
Fri 26 May	Break up for Half Term

### **COMING UP!**

#### **Dates for your diary:**

New Starter Welcome Meetings – w/b 6<sup>th</sup> June

Open Day – Thursday 8<sup>th</sup> June

Make a £ Grow – w/b 19<sup>th</sup> June

#### **Sports Week – w/b 26<sup>th</sup> June**



- Year 5/6 Sports 26<sup>th</sup> June – 1.30pm to 3.00pm
- Year 3/4 Sports 27<sup>th</sup> June - 1.30pm to 3.00pm
- Year EYFS Sports 28<sup>th</sup> – 9.00am to 10.30am
- Year 1/2 Sports 28<sup>th</sup> June - 1.30pm to 3.00pm

AND MUCH MORE – WATCH THIS SPACE!



### **Keeping in touch**



Our main switchboard telephone number is **01270 749908** and will show as this on caller ID



We use e-mail as our main method of communicating with parents and carers as it's quick, efficient and cost effective. Please make sure we have your current e-mail address so you don't miss important communications.

	We also distribute up-to-the-minute information via Twitter <a href="#">@MablinsSchool</a> which can be viewed on the front page of our website
	<a href="http://www.mablinslaneschool.co.uk">www.mablinslaneschool.co.uk</a>

Please be reminded that the teachers are busy with their classes during the day and are not available for appointments unless previously arranged. The best time for appointments is after school.

## **Community News**

### **Police Incident 12.5.23**

The police have asked us to share the news page regarding the police incident that occurred in the Crewe area on the 12.5.23, please click on the link below.

[Crewe police arrest teenager in connection with reports of a male with a knife | Cheshire Constabulary](#)

### **Charity Fashion Show**



**Tickets:**  
**£6.99 inc.**  
**one glass of**  
**fizz**

**FIZZ FASHION**

**CHARITY FASHION SHOW**

IN AID OF RSPCA CREWE NANTWICH AND DISTRICT BRANCH REG. 256976

**24.05.2023**  
**19:45 PM**  
**AT CREWE VAGRANTS**

SCAN ME

Way and Wistaston Road will take about thirty minutes and will end in Queens Park, where families are invited to bring a picnic.

Kidical Mass has a vision: making space for the next generation, where children and young people are able to safely and independently travel by cycle wherever they live.

Crewe used to be known as a cycling town, mostly flat, it takes only 15 minutes to cross on a cycle, but can be 40 minutes in a car in heavy traffic. A child-friendly town is a town that's good for all people, whatever their ability or age. 'It's good for you, and good for Crewe'.

For updates see our FB page

at <https://www.facebook.com/groups/kidicalmasscheshire/>

Please book a place directly at Eventbrite as it will help us plan.

<https://www.eventbrite.com/e/kidical-mass-cheshire-tickets-596237832407?utm-campaign=social&utm-content=attendeeshare&utm-medium=discovery&utm-term=listing&utm-source=cp&aff=escb>

### **Football Players Wanted!**



**PLAYERS WANTED**

**U10 HURRICANES**  
TRAINING FRI 5.30-6.30pm. MATCHES SUN

CREWETOWNFOOTBALLCLUB @GMAIL.COM  
@CREWETOWNFC

CONTACT: VIA EMAIL/FACEBOOK

## **They're Our Streets Too - Make Them Safe for Us!**

Kidical Mass Crewe invites families to join a slow safe fun cycle ride on Sunday 11th of June, at 11:00 from Crewe Lifestyle Centre to Queens Park to campaign for safer streets for everyone. This gentle, slow route along Vernon